



# Formulation of oxide suspensions for liquid processing of ceramic matrix composites

Florian Boutenel, Anne Aimable, Gilles Dusserre, Thierry Cutard, Thierry Chartier

## ► To cite this version:

Florian Boutenel, Anne Aimable, Gilles Dusserre, Thierry Cutard, Thierry Chartier. Formulation of oxide suspensions for liquid processing of ceramic matrix composites. HT-CMC 10 - 10th International Conference on High Temperature Ceramic Matrix Composites, Sep 2019, Bordeaux, France. 2019. hal-02300057

**HAL Id: hal-02300057**

**<https://imt-mines-albi.hal.science/hal-02300057>**

Submitted on 29 Sep 2019

**HAL** is a multi-disciplinary open access archive for the deposit and dissemination of scientific research documents, whether they are published or not. The documents may come from teaching and research institutions in France or abroad, or from public or private research centers.

L'archive ouverte pluridisciplinaire **HAL**, est destinée au dépôt et à la diffusion de documents scientifiques de niveau recherche, publiés ou non, émanant des établissements d'enseignement et de recherche français ou étrangers, des laboratoires publics ou privés.



# FORMULATION OF OXIDE SUSPENSIONS FOR LIQUID PROCESSING OF CERAMIC MATRIX COMPOSITES

Florian Boutenel<sup>1</sup>, Anne Aimable<sup>2</sup>, Gilles Dusserre<sup>1</sup>,  
Thierry Cutard<sup>1</sup>, Thierry Chartier<sup>2</sup>

INSTITUT CLÉMENT ADER

irCer

institut de recherche  
sur les céramiques

1: Institut Clément Ader – Université de Toulouse, CNRS, IMT Mines Albi, INSA, UPS, ISAE-SUPAERO – Campus Jarlard, 81013 Albi CT Cedex 09, France  
mail: florian.boutenel@mines-albi.fr, gilles.dusserre@mines-albi.fr and thierry.cutard@mines-albi.fr

2: IRCER – Université de Limoges, CNRS, UMR 7315 – Centre Européen de la Céramique, 12 Rue Atlantis, 87068 Limoges, France  
mail: anne.aimable@unilim.fr and thierry.chartier@unilim.fr

## Introduction

- Context:**
  - Oxide-Oxide ceramic matrix composites can be used as high-temperature components for gas turbine engine technologies due to their good thermomechanical properties. [1]
  - Liquid processes (*Resin Transfer Molding* and *Liquid Resin Infusion*) are more advantageous than CMC conventional ones.
  - The formulation of suspensions represents the first essential step for liquid processing. [2]
  - The suspension must be well dispersed, stable and have a low viscosity (< 1 Pa.s).
- Aim of this study:**
  - Formulate a bi-component suspension (with submicron alumina and colloidal silica) suitable for the liquid processing of oxide-oxide ceramic matrix composites

## Materials

- Mixture proportion: 59 vol.% of Al<sub>2</sub>O<sub>3</sub> and 41 vol.% of SiO<sub>2</sub>, corresponding to the mullite ratio

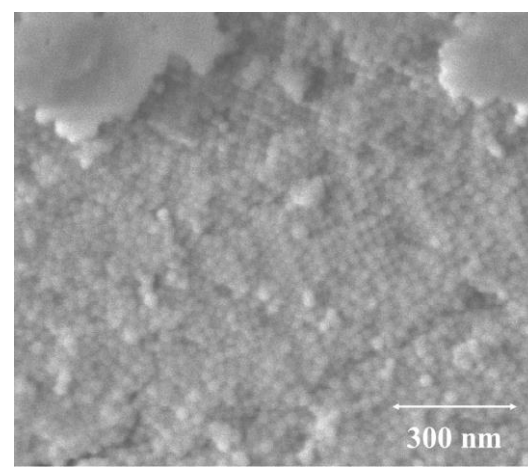
### Colloidal Silica

Particle size	20.0 – 24.0 nm
Surface area	129 – 155 m <sup>2</sup> .g <sup>-1</sup>
Volumetric mass density	2.2 g.cm <sup>-3</sup>

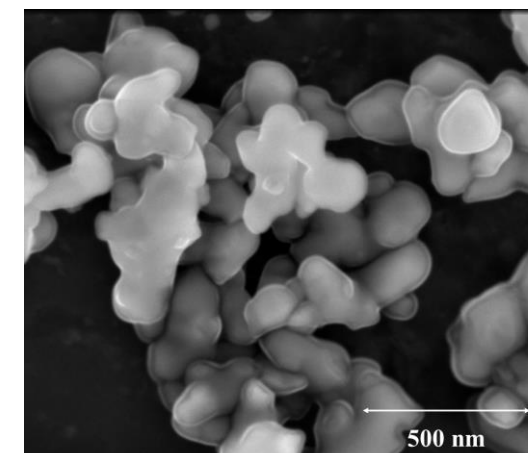
Ludox® AS-40, 40 wt.% suspension in water (Grace Davison, USA)

Technical Data

SEM Observation



### Submicron Alumina



AKP50, high purity alpha-alumina powder (Sumitomo Chemical, Japan)

SEM Observation

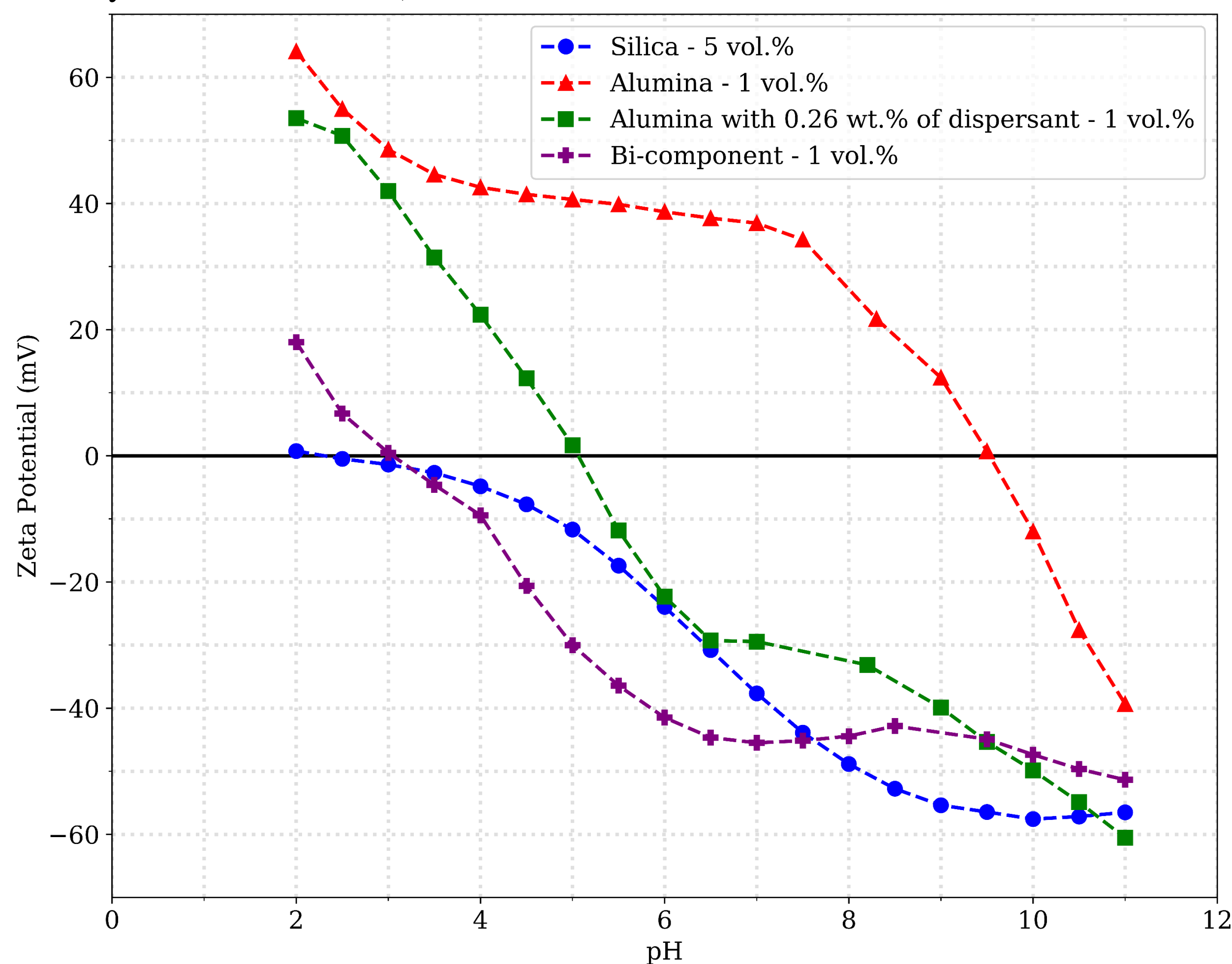
Technical Data

Particle size	200 nm
Surface area	10.3 m <sup>2</sup> .g <sup>-1</sup>
Volumetric mass density	3.98 g.cm <sup>-3</sup>

## Results

### Dispersion

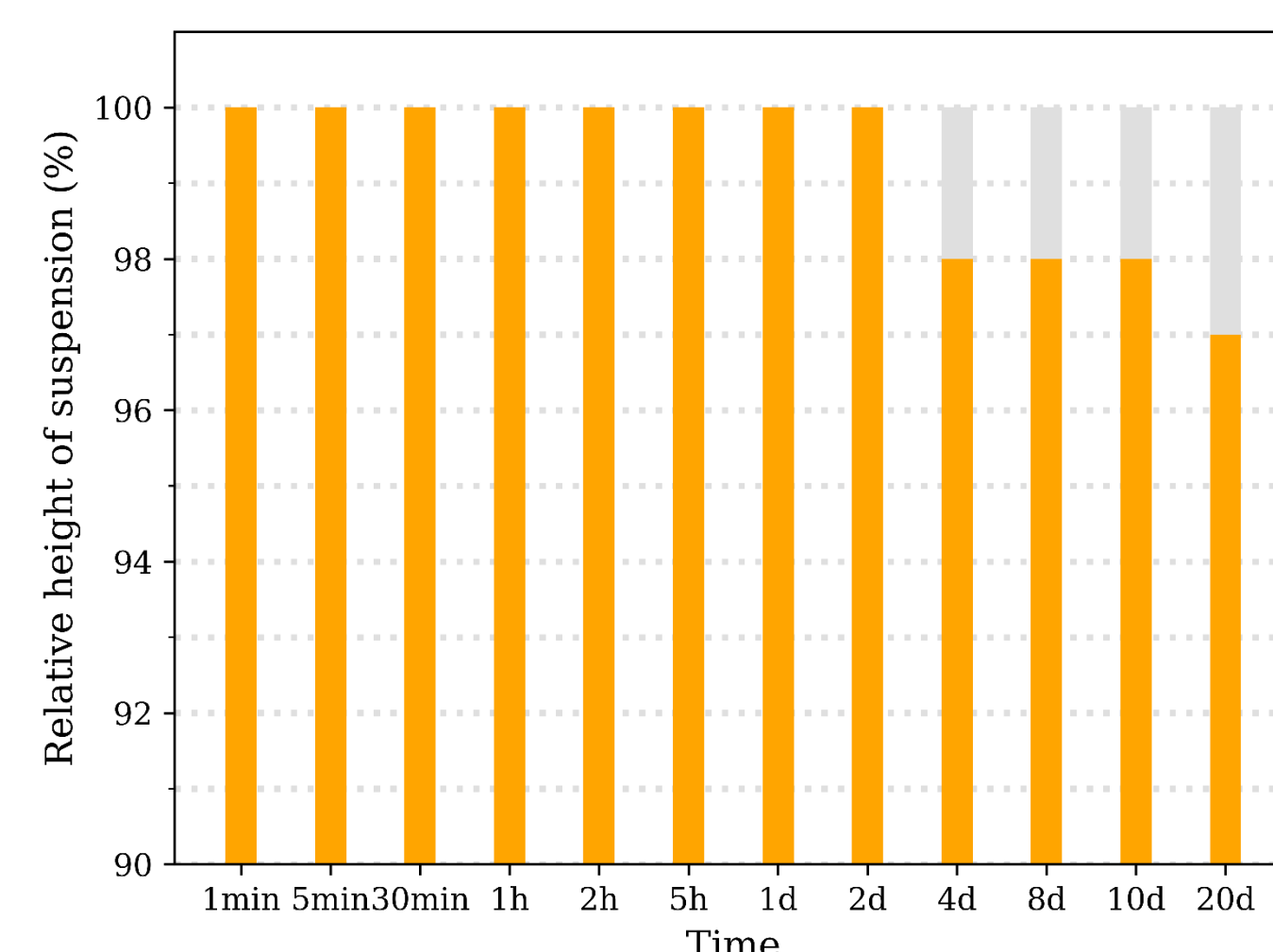
- Measurement of the zeta potential of diluted suspensions as a function of pH – Acoustosizer IIs (Colloidal Dynamics LLC, USA)



- The silica suspension possesses a negative zeta potential from pH = 2 to pH = 11.
- The zeta potential of the alumina suspension is positive ( $\zeta = 21.7$  mV) at natural pH (pH = 8.3) and its value is not sufficient to avoid particles agglomeration.
- This agglomeration can take place between particles of alumina (homo-agglomeration) but also between particles of alumina and silica (hetero-agglomeration).
- By adding 0.26 wt.% of dispersant (Darvan® C-N, Vanderbilt Minerals LLC, USA), an ammonium polymethacrylate, the isoelectric point (IEP) of the alumina is shifted from pH = 9.5 (without dispersant) to pH = 5.1.
- The bi-component suspension is defined as the mixture of the silica suspension and the alumina suspension with 0.26 wt.% of dispersant in the proportion given previously.
- This suspension is well dispersed because the zeta potential at natural pH (pH = 9.5) is measured at  $\zeta = -44.7$  mV.

### Stability

- Sedimentation tests were performed to study the stability of the suspension.
- A 40 vol.% bi-component suspension was considered.
- Sedimentation is observable after a time of 4 days.
- In consequence, the bi-component suspension is stable in comparison with the process time (less than one day).

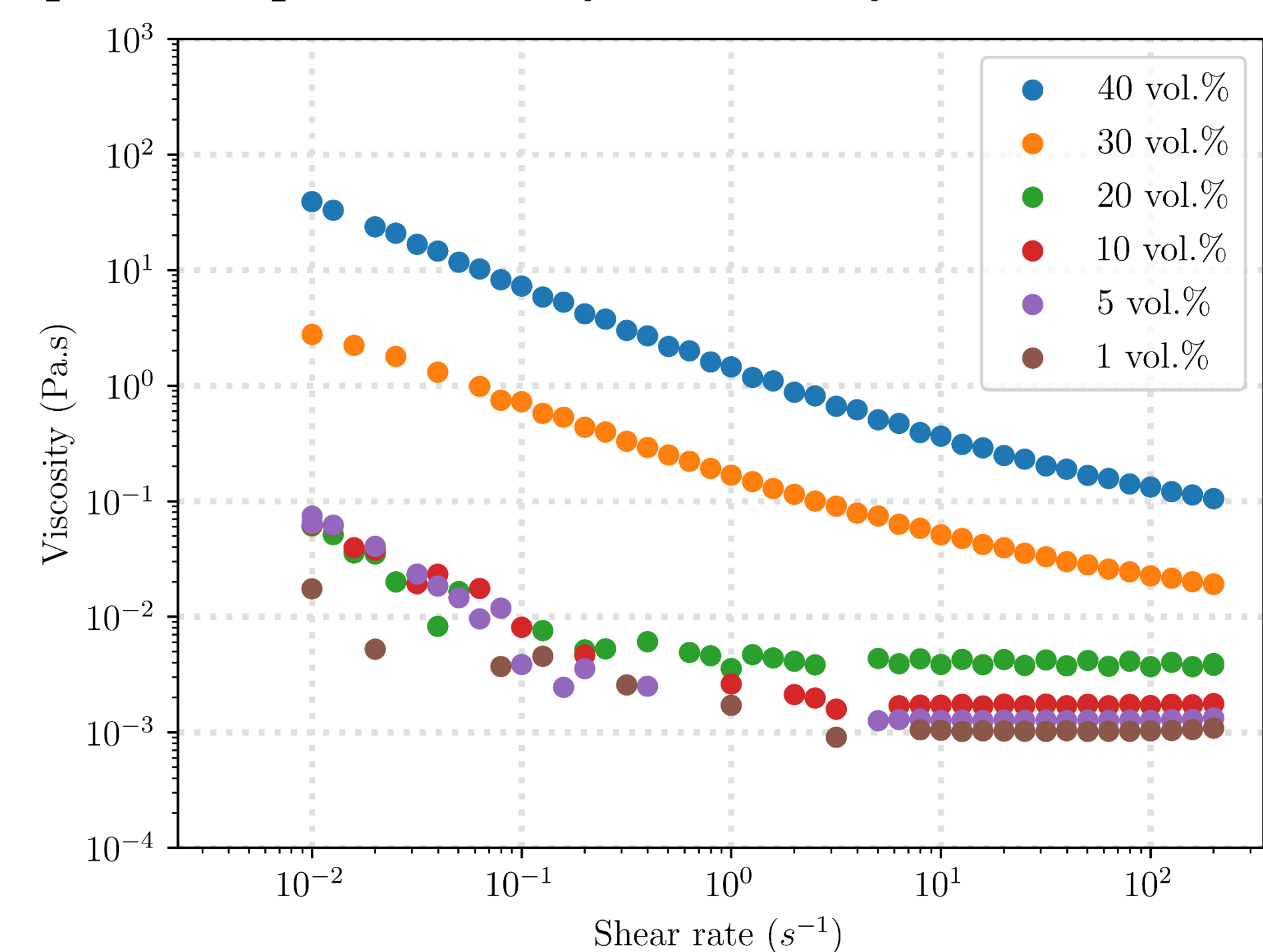


### Rheology

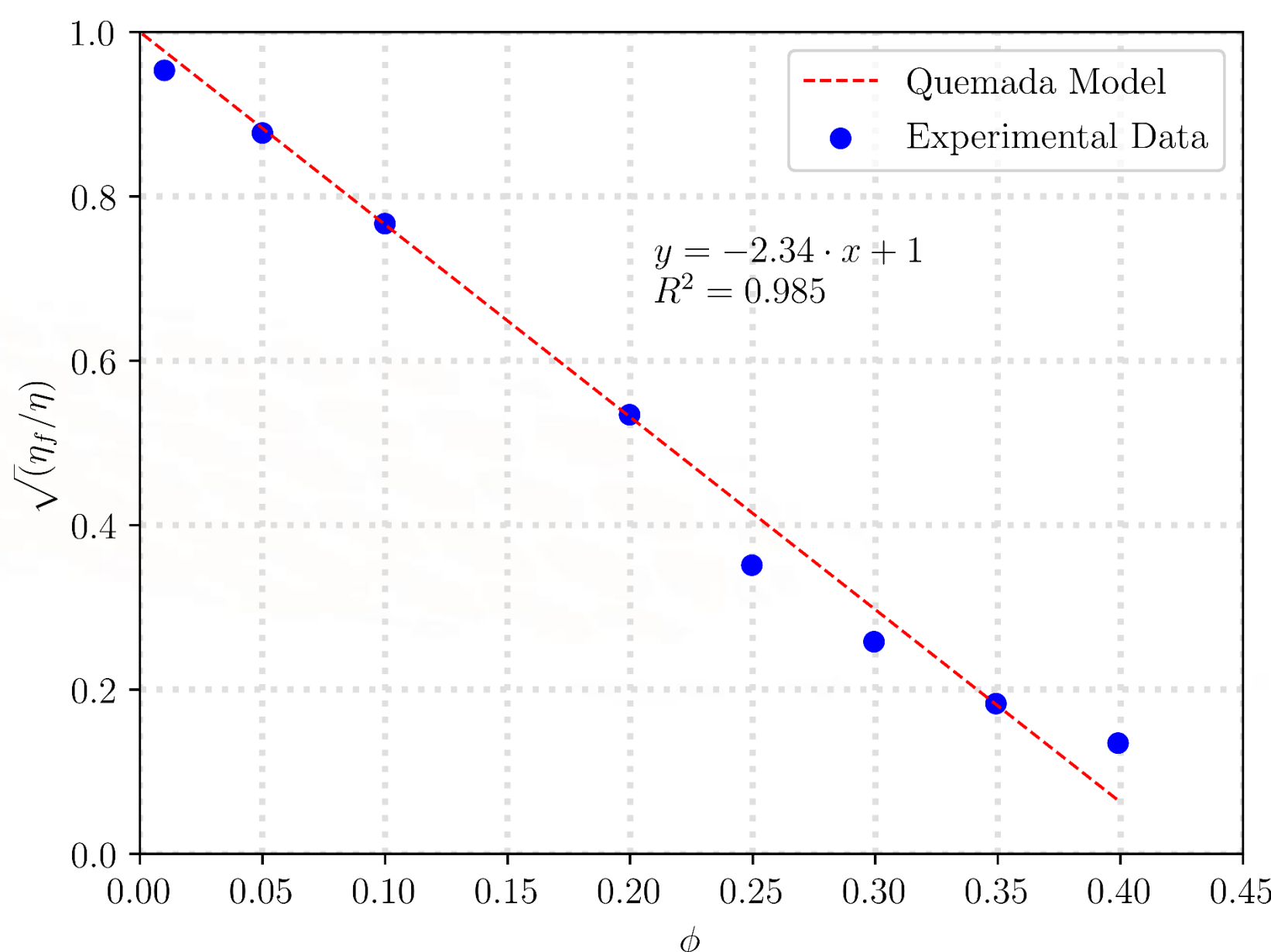
- Measurements performed using an AR-G2 rheometer (TA Instruments, USA) equipped with a cone-plate geometry.

- Rheological behavior of the bi-component suspension (from  $\dot{\gamma} = 10^{-2}$  s<sup>-1</sup> to  $\dot{\gamma} = 200$  s<sup>-1</sup>)**

- The rheological behavior of the suspension is dominated by the colloidal and hydrodynamic interactions and by the brownian motions.
- At low shear rates, the behavior is shear thinning.
- Whereas at high shear rates, the viscosity is constant.
- Moreover, the solid concentration represents an essential variable regarding the rheology.



- Influence of solid concentration on suspension viscosity**



- Quemada model:

$$\sqrt{\frac{\eta_f}{\eta}} = 1 - \frac{\phi}{\phi_{max}}$$

$\eta$  : viscosity of the suspension at the plateau (Pa.s)  
 $\eta_f$  : viscosity of the interstitial fluid – water (Pa.s)  
 $\phi$  : solid concentration (vol.%)  
 $\phi_{max}$  : maximum packing fraction (vol.%)

Identification of the model parameter  $\phi_{max}$   
by linear regression

$\eta_f$	$\phi_{max}$
0.001 Pa.s	42.69 vol.%

- The influence of solid concentration on the suspension viscosity is well described by a Quemada model.

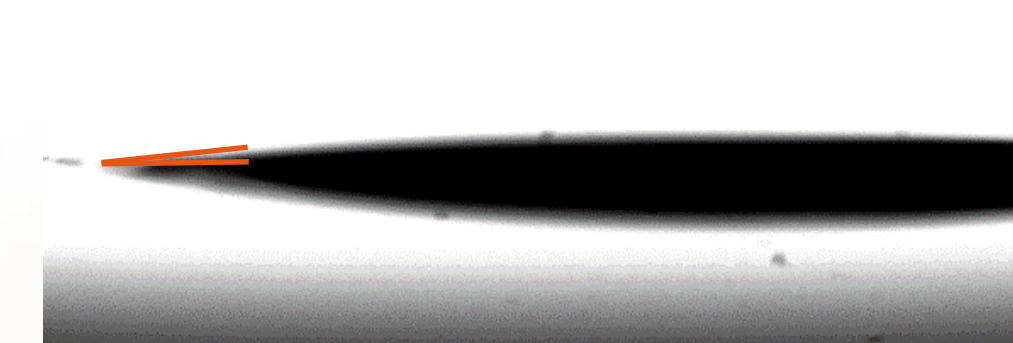
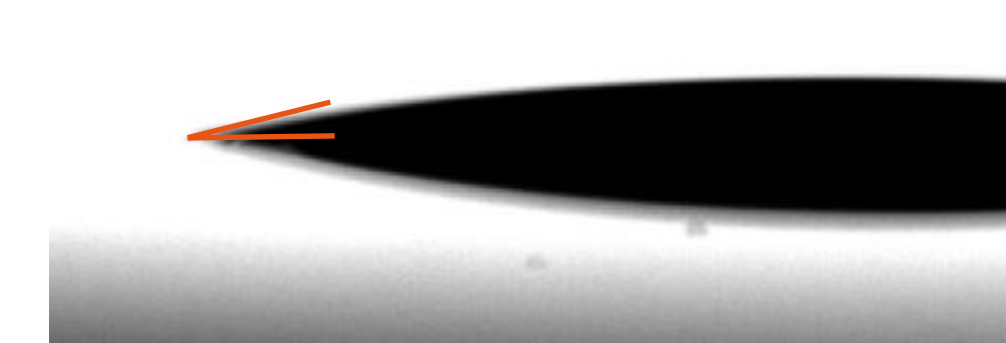
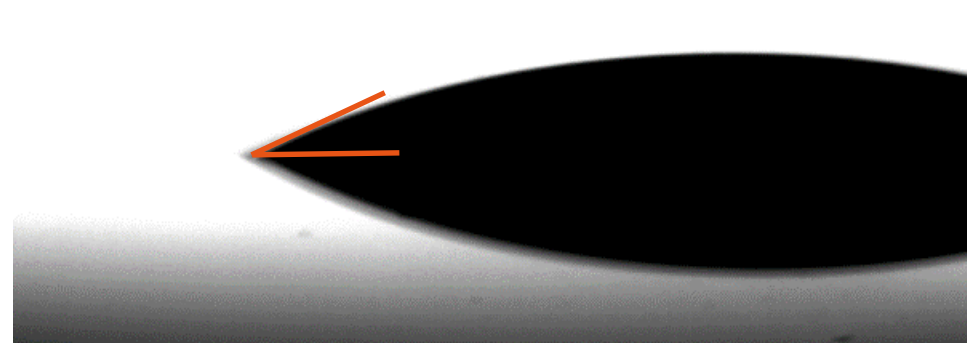
### Wetting

- Measurement of the contact angle of a 25 vol.% bi-component suspension drop on an alumina planar substrate
- Surface agent : BYK-348, polyether-modified siloxane (BYK Additives & Instruments, Germany)

Without surface agent

With surface agent in the suspension

With surface agent on the substrate



- The contact angle decreases by using surface agent either in the suspension and on the substrate.
- The case for which the surface agent is deposited on the substrate surface is the most favorable.

## Conclusion

- A suspension of submicron alumina and colloidal silica has been formulated. It is well dispersed (no agglomeration of particles), stable (in comparison with the process time) and has a low viscosity (< 1 Pa.s). Moreover, the influence of solid concentration on the rheological behavior of the suspension is well described by a Quemada model. Furthermore, the wetting of the suspension can be promoted by using a surface agent.
- This bi-component suspension is thus suitable for the liquid processing of oxide-oxide ceramic matrix composites.

## References

- [1] Zok, F.W. and Levi, C.G. (2001). Mechanical properties of porous-matrix ceramic composites. *Advanced Engineering Materials*, vol. 3, n°1-2, p. 15-23.
- [2] Billotte, C., Fotsing, E.R. and Ruiz, E. (2017). Optimization of alumina slurry for oxide-oxide ceramic composites manufactured by injection molding. *Advances in Materials Science and Engineering*, vol. 2017.

## Acknowledgements

This research received a grant from the Occitanie region and fundings from Institut Carnot M.I.N.E.S (ANR).